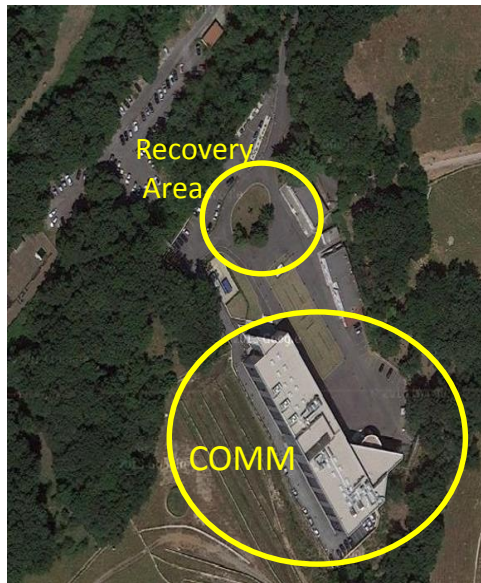


WHAT TO DO IN CASE OF EMERGENCIES¹

EXTERNAL VISITORS HAVE TO FOLLOW INSTRUCTIONS GIVEN BY THE EMERGENCY STAFF PERSONNEL.

- ❖ EVENTS WILL BE REPORTED FROM GENERAL ALARM.
 - ❖ IT IS ABSOLUTELY FORBIDDEN TO USE THE ELEVATORS.
 - ❖ KEEP CALM AND PAY ATTENTION TO THE BROADCAST COMMUNICATIONS.
 - ❖ CEASE ALL ONGOING ACTIVITIES.
 - ❖ NEGLECTING TO RECOVER UNNECESSARY PERSONAL BELONGINGS THAT MIGHT MAKE IT DIFFICULT AND HINDER EVACUATION.
 - ❖ HELP, IF NECESSARY, COLLEAGUES IN DIFFICULTY OR NON-AMBULATORY.
 - ❖ LEAVE IN AN ORDERLY MANNER (DO NOT RUN AND SHOUT), THE BUILDING FOLLOWING THE ESCAPE ROUTES MARKED BY EMERGENCY SIGNS
 - ❖ REACH THE COLLECTION POINT ASSIGNED.
 - ❖ IN CASE OF ESCAPE ROUTES ARE PREVENTED BY THE FLAMES, GET INTO AN OFFICE, SHUT THE DOOR, NOTIFY YOUR PRESENCE AND WAIT FOR RESCUE.
 - ❖ DO NOT STAND IN CORRIDORS AND STAIRS OR NEAR THE ESCAPE DOORS.
- ❖ RE-ENTRY INSIDE THE BUILDING AFTER THE AUTHORIZATION OF EMERGENCY STAFF.



¹ E.g. FIRE INSIDE THE BUILDING, EARTHQUAKE, WARNING OR SUSPICION PRESENCE OF EXPLOSIVE DEVICES, WHEN IT IS DEEMED PRECAUTIONARY NECESSARY THE EVACUATION OF THE BUILDING.



SAFETY BOOKLET

FOR PEOPLE INVOLVED IN THE

SHADE MED 1-2016



SIGNALS

INSIDE THE COMM BUILD YOU CAN FIND:

❖ GREEN SIGNALS (E.G. WAY OUT; FIRST AID KIT, ETC.) - RED SIGNALS (E.G. HYDRANTS; ESTINGUISHER, ETC.).



EMERGENCY EXIT



THIS WAY OUT



FIRST AID KIT



EMERGENCY ASSEMBLY POINT



HYDRANT



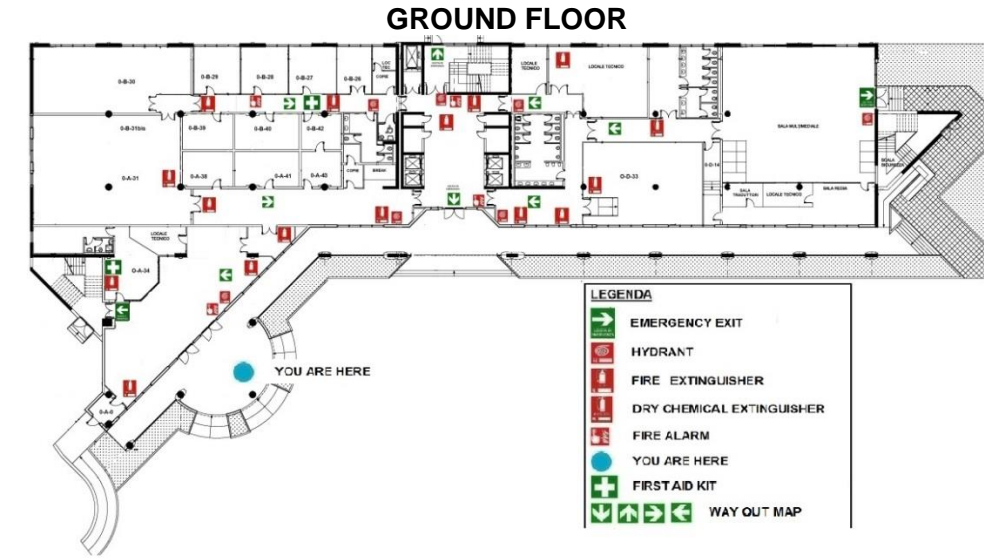
FIRE ALARM



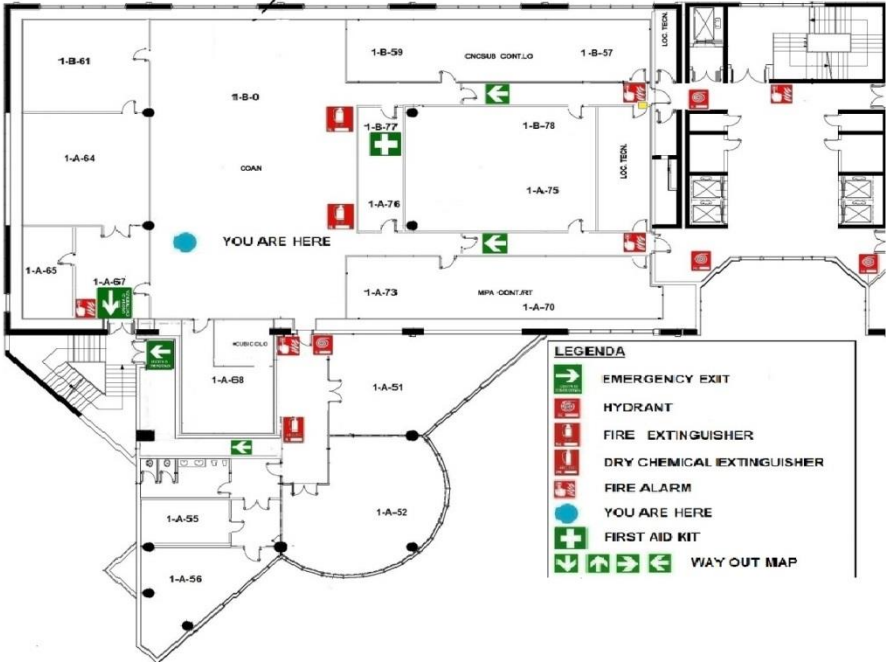
FIRE EXTINGUISHER

PLANIMETRY

EACH FLOOR IS DIVIDED INTO FOUR MAIN AREAS “A – B – C – D” WHERE ARE LOCATED THE FOLLOWS FLOOR PLANS WITH DIRECTIONS TO THE EXODUS:



FIRST FLOOR



THIRD FLOOR

