



Increase Safety, Efficiency and Reliability of Railways Worldwide

Global leader and technology innovator specialized in design and development of end-to-end diagnostic, signaling and asset management solutions for railways and rapid transits.

Global Reach

Headquartered in Monopoli (Italy), the MERMEC Group is led by the parent company MERMEC S.p.A. and comprises the following subsidiaries:

- **Tecnogamma**, Treviso (Italy)
- **MERMEC France**, Marseille (France)
- **MERMEC UK**, Derby (UK)
- **MERMEC Turkey**, Ankara (Turkey)
- **MERMEC Inc.**, Columbia (SC, USA)
- **MERMEC China**, Beijing (China)
- **MERMEC Australia**, Sydney (Australia)
- **MERMEC India**, New Delhi (India)



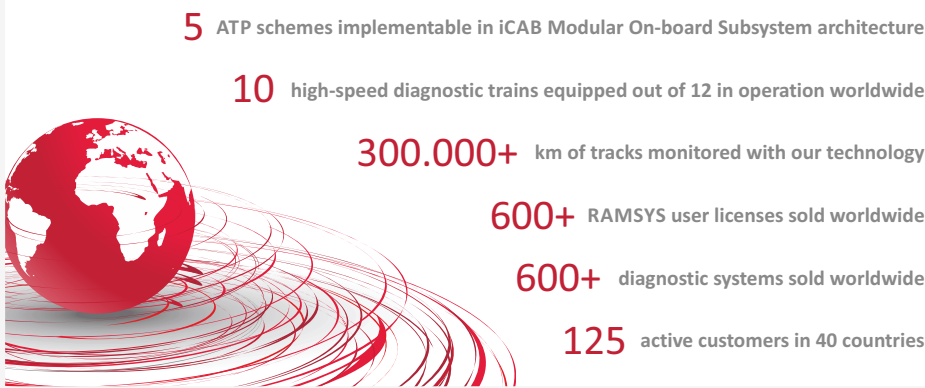
The group has more than 125 active customers in 40 countries including high-speed and conventional railways, metro and light-railways, heavy-hauls, steel industries and rolling-stock manufacturers.



Diagnostics

- On-board non-contact diagnostic systems for automated measurement and inspection of railway infrastructure components (Track, Overhead Line, Tunnel & Clearance, TLC & Signaling Networks).
- Wayside non-contact diagnostic systems for automated measurement and inspection of rolling stock (Wheel, Brake, Bearing, Ride Quality, Wheel/Rail interaction, Dynamic Weighing, Train Clearance and Safety Appliances, Thermal scanning).
- Self-propelled measuring vehicle for on-board diagnostic systems installation and integration.
- Contracted services for railway infrastructure monitoring using hi-rail vehicles and professional services.

MERMEC GROUP facts & figures



Innovation as a competitive advantage

MERMEC is currently contributing with its expertise and know-how to more than 20 international research projects of which 10 are financed by the European Union, within the Seventh Framework Programme (FP7). MERMEC Group has cooperated with more than 40 companies operating in the railway industry as well as with 10 of the most prestigious European Universities and Research Institutes. MERMEC Group actively participates in 13 different working groups within UNISIG, UNIFE, CEN and ERRAC.



In 2010 MERMEC became a UNISIG Associated Member, being the second signaling equipment manufacturer entering the prestigious international consortium since its establishment in 1999.

DIAGNOSTICS facts & figures

60 different diagnostic systems perfectly integrated and seamlessly interoperable.

90 customers in 35 countries.

10 high-speed diagnostic trains equipped out of 12 in operation worldwide.

More than 600 measurement and inspection systems sold worldwide.

Total Quality Management

First company to obtain the ISO 9001 certification in the railway diagnostic products in 1994, MERMEC considers the Total Quality Management the key factor in its differentiation strategy. In 2008 MERMEC has introduced Six Sigma and Lean Manufacturing business management practices extending them afterwards the to all the group's companies.



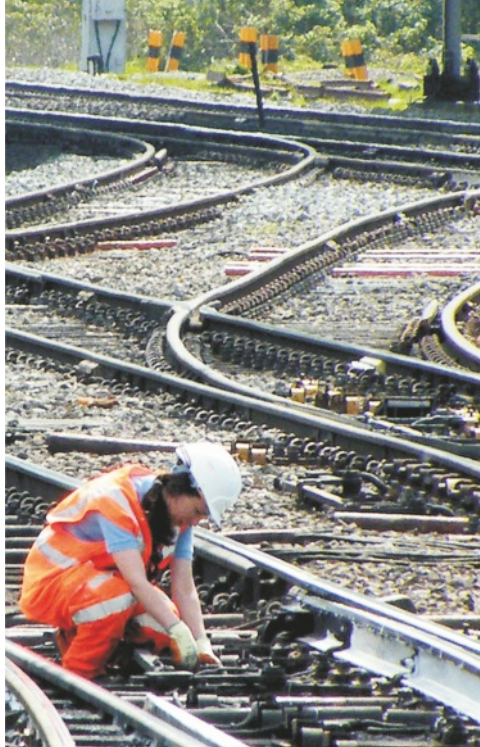
Signalling

Design, manufacturing, installation, commissioning and after sales services of complete signalling turnkey solutions.

- Automatic train protection systems (ERTMS/ETCS Level 1, ERTMS/ETCS Level 2, SCMT, SSC, SCMT/SSC BL3).
- Trackside equipment (Hot Box & Hot Wheel Detectors and LED Signals).
- SIL 4 train inspection portals interfaced with signaling.
- Signaling diagnostics systems for Telecommunication and signaling networks status analysis (Check of the GSM-R signal quality, functioning status and correct positioning of eurobalises, measurement and analysis of magnetic fields, air-gap index evaluation etc.).
- Special self-propelled signalling diagnostic vehicles.

SIGNALLING facts & figures

- 5 ATP schemes implementable in iCAB Modular On-board Subsystem architecture
- 761 ATP on-board subsystems.
- 2350 km of line equipped with ATP wayside subsystem.
- 6700 eurobalises.
- 3500 LEU (signal and station).
- UNISIG Associated Member since January 2010.

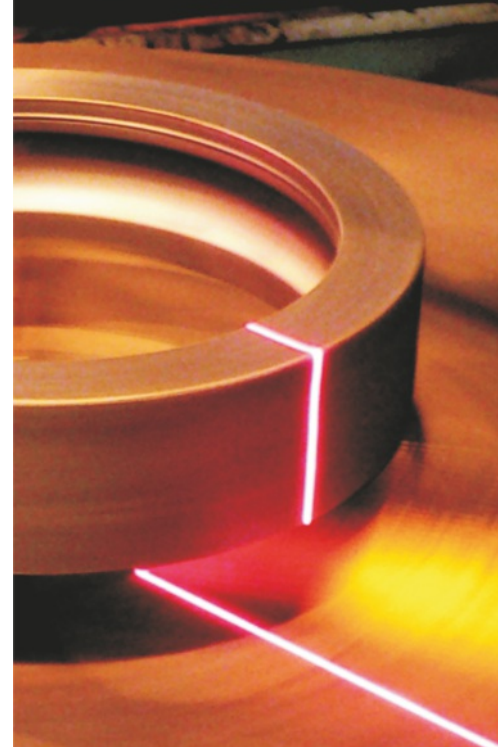


RAMSYS

- RAMSYS is a single, integrated solution for the management of all the data related to railway maintenance (e.g. assets, defects, activity history, measurement, etc.) supporting maintenance, renewal planning and control.
- Logic architecture is based on two macro modules, one dedicated to data analysis, while the other is devoted to optimized planning of maintenance and renewal works.
- RAMSYS is able to perform virtual analyses on the condition measurements of any railway asset. According to customer requirements different modules - specifically designed to analyze a single asset - can be included during implementation: Permanent Way, Switches & Crossings, Catenary, Bridges & Structures, Signaling, Rolling Stock and TLC.

RAMSYS facts & figures

13 customers in 9 countries.
 More than 600 user licenses sold.
 More than 80.000 km of track managed.
 More than 20.000 railway vehicles managed.



Steel & Industrial

- Non-contact diagnostic systems for the automated dimensional measurement of hot and cold "hot rolled long products" (bars, rails, beams and special sections).
- Non-contact diagnostic systems for the automated surface inspection of hot rolled long products during the rolling phase.
- Non-contact diagnostic systems for the automated dimensional measurement of hot and cold seamless rolled rings, even contoured, flanges and monobloc wheels.
- 3D Automatic Scanner of large Open-die Forgings (both standard and custom) for the dimensional measurement of the worked pieces directly during the production or finishing phases.
- High-flow digital cameras characterized by high performance and extreme configurability capable of promptly responding to a multitude of vision computing needs coming from high demanding industrial sectors.

STEEL & INDUSTRIAL facts & figures

4 main industrial sectors served:

- hot & cold hot rolled long products;
- hot & cold seamless rolled rings;
- monobloc wheels;
- large open-die forgings.

More than 30 customers in 11 countries.
 More than 45 measurement stations installed.

HEADQUARTERS

MERMEC S.p.A.
via Oberdan, 70
70043 Monopoli (BA), ITALY
Ph. +39 080 9171
Fax +39 080 9171 112
mermec@mermeccgroup.com

SUBSIDIARIES

TECNOGAMMA S.p.A.
Badoere di Morgano (TV), ITALY
tecnogamma@mermeccgroup.com

MERMEC UK Ltd
Derby, UK
mermecuk@mermeccgroup.com

MERMEC FRANCE Sarl
Marseille, FRANCE
mermecfrance@mermeccgroup.com

MERMEC TURKEY
Ankara, TURKEY
mermecurkey@mermeccgroup.com

MERMEC Inc.
Columbia, SC, USA
mermecinc@mermeccgroup.com

MERMEC CHINA
Beijing, CHINA
mermecchina@mermeccgroup.com

MERMEC INDIA
New Delhi, INDIA
mermecindia@mermeccgroup.com

MERMEC AUSTRALIA
Sydney, AUSTRALIA
mermeccaustralia@mermeccgroup.com